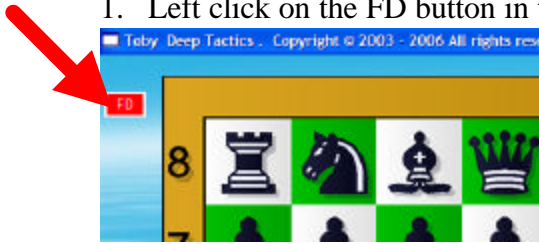
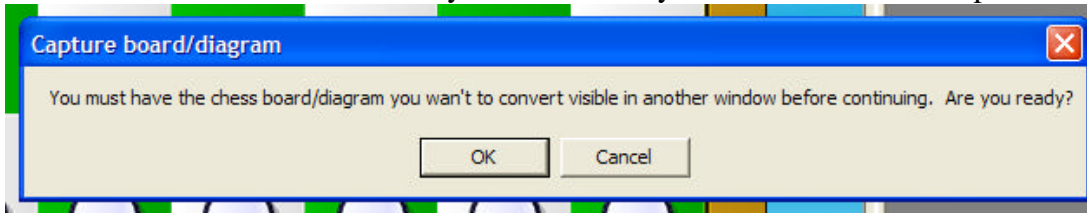


# How to Use Diagram Converter in Deep Tactics

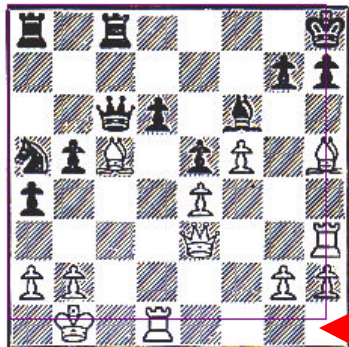
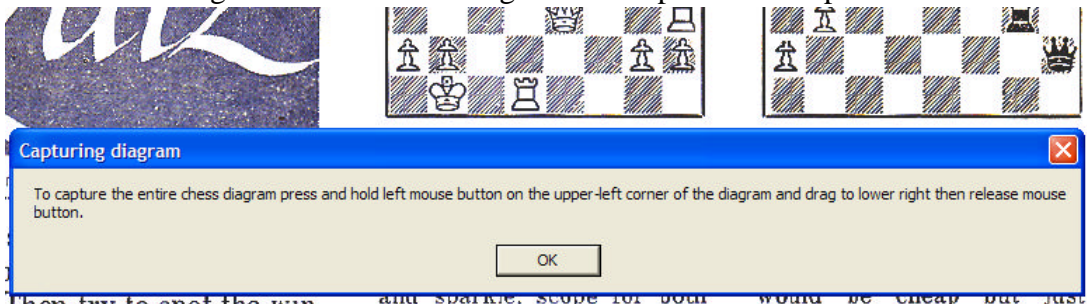
1. Left click on the FD button in the upper left of the board screen.



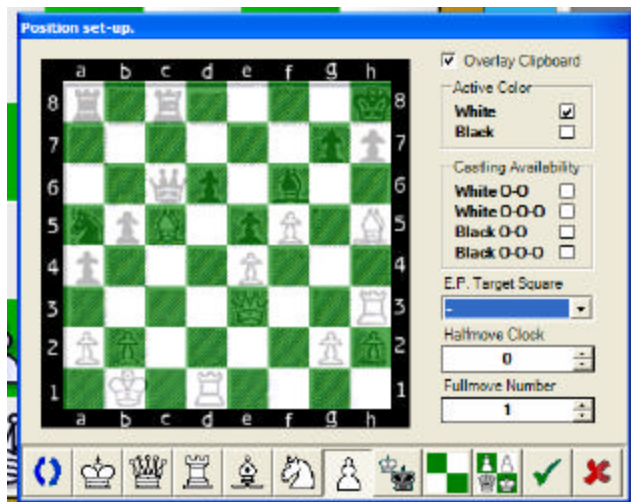
2. Make sure that the chessboard you want is ready on a window and then press OK.



3. Instructions appear on how to use the mouse to capture the diagram. Just press & hold the mouse down on upper left corner of the diagram-just capture the squares, not the outside board region. This is so the diagram lines up on our setup board.



4. Drag mouse upper left to lower right & let go.



5. The setup board appears. You can click on the pieces and colors at the bottom to place the pieces on the board over the transparency you just copied. Click twice on the square to remove the piece. The far left button lets you flip the board if Black is on the bottom. On the right you must click the color to move and castling rights. If an en passant is possible, enter the target square. The half move clock is moves left without a capture or pawn move for the 50 move draw rule. The full move number is the actual game move if you want it. When completed, just click on the checkbox and the position is placed on our main board. From there, you can copy & paste to Fritz.

**You can change the pieces on the board by right clicking on the mouse.  
This speeds up piece corrections and placement a lot!**