

# Deep Tactics 5.0 Quick Start

## Main Board-

Right Click to change colors, copy-paste FEN & board to clipboard & move pieces

Reverse colors & make game moves

Change Engines

Play Game Now

Enter Game Now to save &/or analyze

Find immediate threats on the board

Change rating strength of engine 200 (Beginner) to 2670+

Change ply depth of tree when database is loaded

Starts annotator & puzzle maker for game selected in database

Starts tactics puzzles to solve

Displays/Sets Time Controls

Extensive How to Use Files/Help as PDF slideshows

Complete Chess Courses-over 2,500 pages in PDF slideshows

Database-displays games, creates & opens databases & auto builds tree

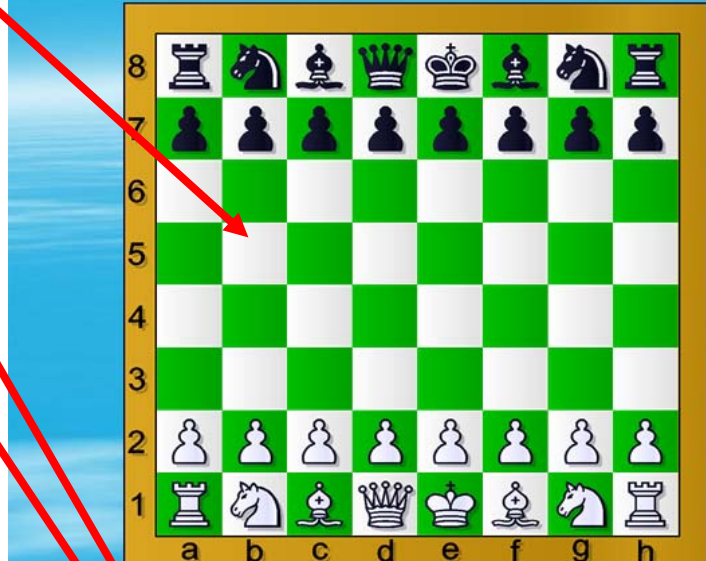
Starts Checkmate trainer

Displays game moves which allows moves to be played on board

Displays tree & node information for opening study

Select game in database you want to review or annotate/analyze

Toby Deep Tactics . Copyright © 2003 - 2004 All rights reserved.



Engine Analysis Graphics Chess Teacher

Ruffian 1.0.1

Perola Valfridsson

Play Game

Enter Game 2600 - Full Strength

Find Threat(s)

Tactics

Puzzles

Use tree

24

Time Control | How To Use/Help | Chess Training

0:00:00 0:00:00

Database Open Tree Game CheckMates

#205 - D00 2)e4 Black Master.pgn

No.	White	Black	Event
1	Molina, J.	Guimard, Carlos E	Mar de
2	Rebizzo, C.	Martin, F	ARG c
3	Stoltz, Gosta	Wienthal, Andor A	Interzo
4	Carvalho, C.	Masaura, Everaldo	3. Tact
5	Fakkel, E.	Tenappel, J.	U20 Oj
6	Avramovic, Z.	Andrijevic, Milan	Ch Ser
7	Stahlberg, Gideon	Book, Eem E	Kemer
8	Ibrahimov, F.	Alsharhan, S	Dubai
9	Kurucsai, I.	Kalesis, Nikoalos	Balacr
10	Kurucsai, I.	Schulz, H.	Open
11	Charles, Gareth	Sontser, Matthew	Ch Aus
12	Stead, Kerry	Weller, Tony	Austra
13	Petersen, Te	Larsen, Peter	Aktiv A
14	Toenjes, J.	Trumpf, W.	Meino
15	Abbasifar, Hasan	Khakpoor, Abbas	Asia
16	Abbasifar, Hasan	Ibragimov, Alibek	Asian
17	Argandona Rivero, I.	Borbjerggaard, Lars	Andor
18	Abbasifar, H.	Mohammad, S.	34th O
19	Abbasifar Hasan	Sturua Zurab	Dubai
20	Vajda, A.	Gruenfeld, Ernst F	Debrec
21	Grau, Roberto	Casullo, M.	South A
22	Fenoglio, V.	Pleci, Isatas	ARG c
23	De Witt, R.	Nogues Acuna, A.	Buenos
24	De Witt, R.	Rebizzo, C.	ARG c
25	Menchik, Vera F	Michell, Reginald P	Hastin
26	Mazel, I.	Yudovich, Mikhail M	URS cl
27	Molina, J.	Arturo, N.	ARG c
28	Parr, Frank	Broadbent, Reginald J	GBR B
29	Parr, Frank	Alexander, Conel H O	GBR B
30	Parr, Frank	Milner Barry, Philip S	GBR B
31	Dus Chotimirsky, Fedo	Ratner, B.	URS sl
32	Reinhardt, F.	Luckis, M.	Buenos

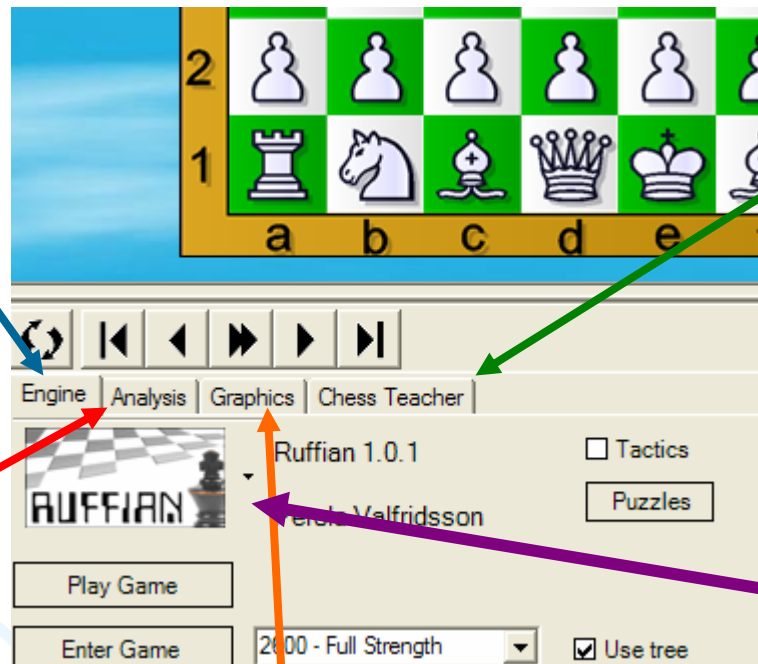
# General Info / More Tabs

- Install Deep Tactics per instructions
- Copy the Tactics database to the Toby folder as seen in help files (Install Inserts)
- Copy all other databases you want to use to hard drive (Checkmates, 5 Million games for openings, World Champions, etc)
- Copy or use the others DVD's as desired for viewing as PDF books, videos, etc

**Engine Tab** displays the main controls as you see here when you start Deep Tactics

**Analysis** shows the engine thinking and allows you to look at multiple lines of analysis (best to worst) for the next move on the board

**Graphics** lets you change and add arrows to your menu and the computers and to draw them on the main board



**Chess Teacher** brings up a display with **Tactics Wizard** which auto-draws arrows and starts visual analyzer. Also provides **Chess Tips** by category you want to learn

Deep Tactics is an interface. Names like Ruffian, Fritz, Shredder, etc stand for the engine which calculates the moves. The interface tells the engine to go and gives it the board position. The engine calculates & feeds back the best moves it thinks can be made from the position. After a new move is selected, the engine is told to stop, then go with a new position. TobyChess Deep Tactics can run most Universal Chess Interface (UCI) engines from here.